

M3M
golfestate™
Finest Golf Resort Living



M3M India Limited
(Formerly: M3M India Developer Limited)
CIN: U80903HR2007PLCO44491

Paras Twin Towers, Tower-B,
6th Floor, Golf Course Road, Sector-54,
Gurgaon - 122002, India

Sales Gallery/ CRM Cell
The Experia, Golf Course Road (Extn.),
Sector-65, Gurgaon - 122002, India

Site
M3M Golfestate,
Golf Course Road (Extn.)
Sector-65, Gurgaon - 122002
India

+91 124 4732000

+91 124 4732010

1800 123 3333

'M3M' to 56263

sales@m3mindia.com, info@m3mindia.com

www.m3mgolfestate.com

BE/05062014/1500

*A Life Of Passion
A Distinctively Qualitative Life
A Lavish Life...*

Your Life At M3M Golfestate!

At M3M, we have pulled out all the stops! Our flagship project. Our pride and joy. No stone has been left unturned to ensure that we provide you with the BEST lifestyle, Golf Resort living this side of the hemisphere. Each aspect of the development has been strategically planned and painstakingly crafted by international and national stalwarts in the field of architecture, design and construction. The result is a masterpiece!



Golf Resort Living

M3M Golfstate brings India's first in-city 'Golf Resort' themed living experience to all golfing lifestyle enthusiasts. Apartments in M3M Golfstate are resplendent with luxury and are conceptualized around a 9-hole Executive Golf Course, thus providing each apartment the panoramic vistas of the beautiful golf greens.

A concept of life where your health, happiness and exclusive peace of mind are supremely achieved.



From an Idea to a Masterpiece M3M Golfestate



“When we were developing the concept of a golf-resort like residential complex, we were in a dilemma. What would a world-travelled, highly successful health-conscious person like as a home? After all, when one ‘has it all and has seen it all’, the scope to impress them is a challenge. This is where ARCOP and M3M came up with the concept of M3M Golfestate. The unique idea of building luxury homes around a 9-hole executive, ‘in-city’ golf course came to mind.”

Ramesh Khosla
Principal Director, ARCOP, Montreal, Canada

“A golf-resort that is more than just that. This 30.35 hectares (75 acres), unique complex provides a truly healthy life for the entire family.”



Nearly 6 km Walking/Jogging Track/Cycling Trail throughout the complex



An Exclusive Pool on the Terrace of one of the Towers

“We made sure that as a philosophy, there are many opportunities and alcoves for groups of people to get together and enjoy an active life. So the recreational facilities are spread throughout the complex.”

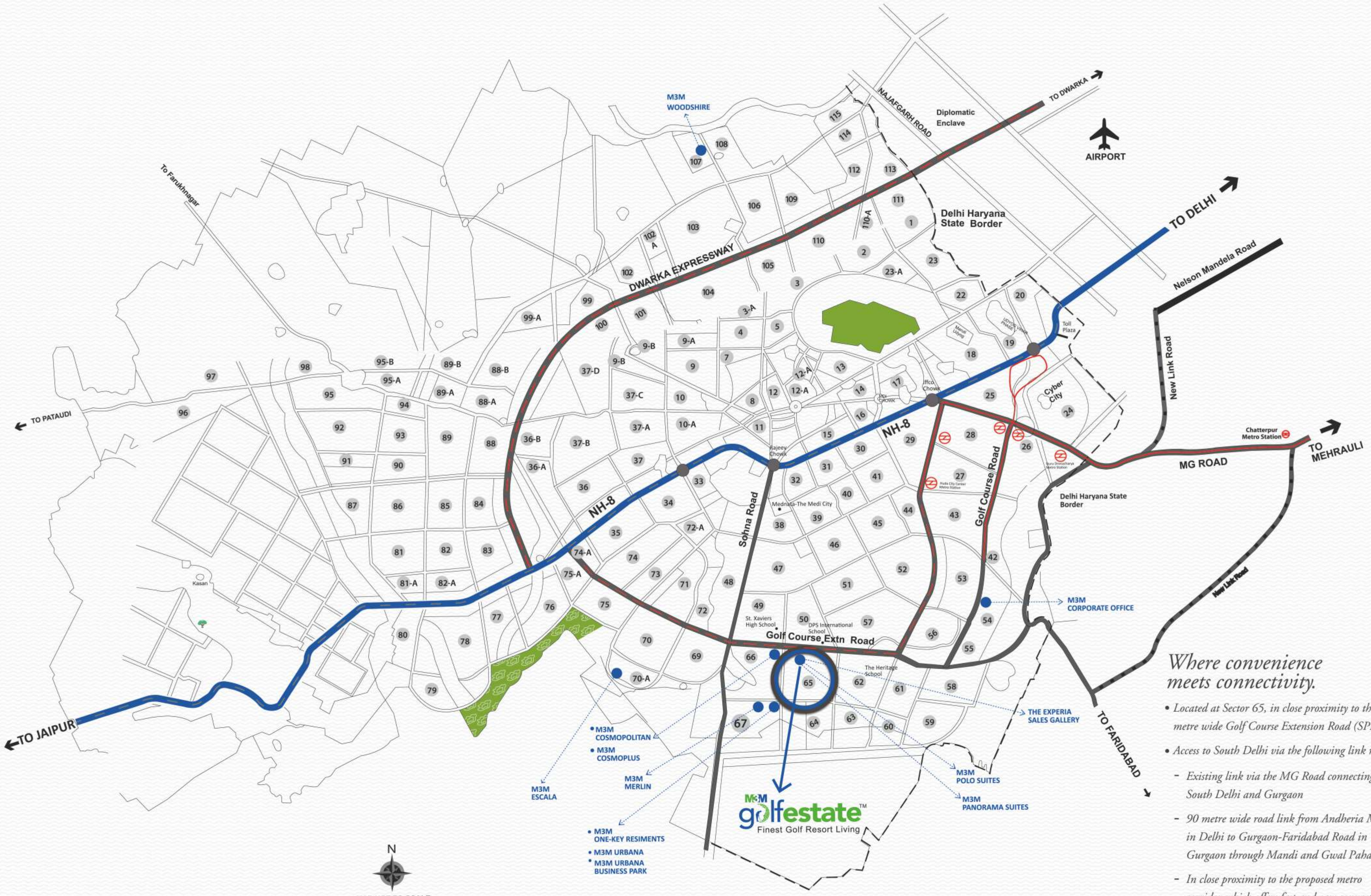


An Ultimate Concierge Service to encompass Residents with sheer Luxury & Convenience

“We have taken great care to ensure that there are wide terraces and balconies, where one can spend time with family and guests. And of course, wherever you go, you have a marvellous view of the golf greens.”

The concept of ‘Terrace-Balconies’ ▶





N
MAP NOT TO SCALE

Where convenience meets connectivity.

- Located at Sector 65, in close proximity to the 90 metre wide Golf Course Extension Road (SPR).
- Access to South Delhi via the following link roads:
 - Existing link via the MG Road connecting South Delhi and Gurgaon
 - 90 metre wide road link from Andheria Mor in Delhi to Gurgaon-Faridabad Road in Gurgaon through Mandi and Gwal Pahari
 - In close proximity to the proposed metro corridor which offers fast and easy connectivity to Delhi-NCR

M3M golfestate™
Finest Golf Resort Living

- M3M COSMOPOLITAN
- M3M COSMOPLUS
- M3M ESCALA
- M3M MERLIN
- M3M ONE-KEY RESIMENTS
- M3M URBANA
- M3M URBANA BUSINESS PARK

- M3M POLO SUITES
- M3M PANORAMA SUITES

• THE EXPERIA SALES GALLERY

• M3M CORPORATE OFFICE

• M3M WOODSHIRE



*A Section of M3M Golfestate
(Fairway West)*

*An Amazingly Well
Thought Out 'Life Plan'.
(others call it site plan)*



- Proposed
Landscape Amenities*
- Netted practice range*
 - Putting course*
 - Club*
 - Seating areas*
 - Playgrounds*
 - Event lawn*
 - Pools*
 - Sports complex*
 - Schools*
 - Pavillion and seating areas*
 - Water features*
 - Jogging and cycling tracks*
 - Splash park*
 - Future development*



- M3M Golfstate Fairway West
- M3M Golfstate Fairway East
- M3M Panorama Suites
- M3M Polo Suites

M3M PANORAMA
EXCLUSIVE SUITES

Fairway east

M3M POLO SUITES
WHERE THE GENTRY RESIDE

ENTRANCE

ENTRANCE

ENTRANCE

Architectural Excellence and Thoughtful Urban Planning by Arcop, Montreal, Canada

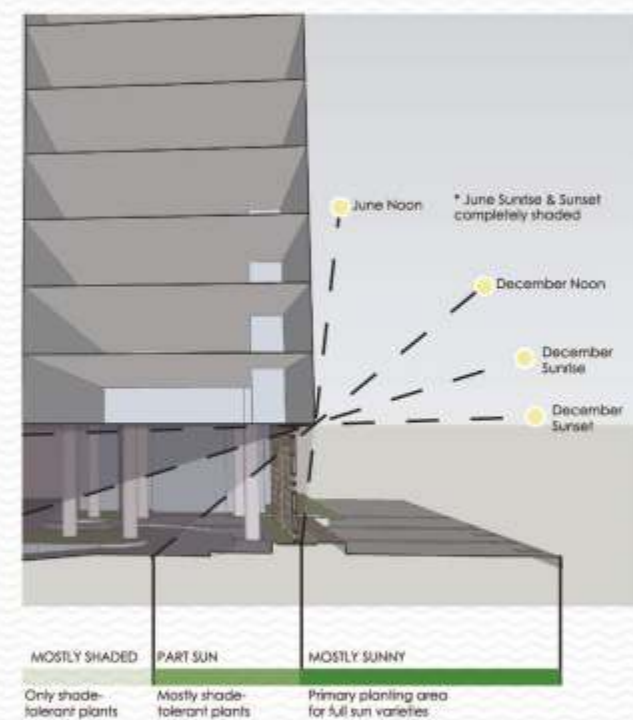
The Urban plan for M3M Golfstate takes into account the theme and philosophy of an enriched life. The overall architectural design provides for a safe circulation around the complex with approximately a 6 km jogging track and vehicle-free walkways. Each tower is designed to have an exclusive entrance area overlooking the splendid green spaces.

- A Drop Off
- B Clubhouse
- C Golf Course (Holes 1 & 9)
- D Lake
- E Pavillion
- F Starter/Hut
- G Event Lawn
- H Pool
- I Pedestrian Promenade
- J Timber Deck

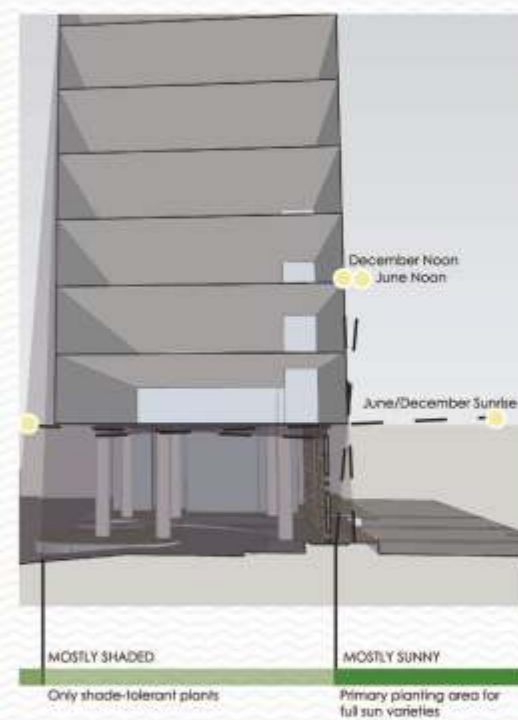


Strategically located, upscale community meeting and recreational havens have been planted on different levels of the towers. Multi-levels and floors have been planned to avoid monotony of blocks. Modern flat slab construction for complete flexibility of space planning for ease of running services and large glazing areas. Triple height stilts to provide uninterrupted views and 100% landscaping in this amenity filled community space.

East-West Orientation



North-South Orientation



Sun and shadow studies have been conducted to ensure maximum benefit to the residents. The structural angles and viewpoints have been designed for optimum panorama and positive mood enhancing scenes.

Typical entry sun shade study





Sculptured Landscaping

by Geyer Coburn Hutchins (USA)

The most important aspect of a healthy lavish lifestyle is the outside environment. Every detail is vital for one to really enjoy life. A view can completely make one's day. That's the beauty of landscapes of M3M Golfstate. Serene, pristine and stretching right up to the horizon. Making your comfort our top priority, we provided every tower with its own amenity area and club.



Childrens Play Areas

Dedicated Kids play area with tot lots, sand pits and water play areas that have wading pool and splash pool which will give your children a safe and healthy environment to have fun. Adventure play area for teenagers, skateboarding, trike track and play hills will definitely catch their fancy. Toddler play area, jumping jets/water sprouts, wet deck, water shooting game and water steps.

- A Recreation Event Lawn
- B Splash Park
- C Play Equipment
- D Pavillion
- E Bench Seating

Visual representation of one of the many children play areas spread across the project.

Multiple Sports Zone

At M3M Golfstate we are endorsing a healthy lifestyle and for that we have a multitude of sports options like cricket pitch, lawn tennis, basketball, multi-activity field, badminton court, squash court, skating rink, fitness corner, outdoor exercise station, cycling track, climbing rock, jogging track/reflexology walk and aerobics/multipurpose court.



- A Basketball Court
- B Tennis/Sport Courts
- C Shaded Viewing Area
- D Skate Park
- E Drop-off
- F Vegetated Buffer At Property Line Wall

Visual representation of one of the many sport zones spread across the project.



Community Spaces

To enhance the community living experience we have created community spaces with sit-outs/benches, reading corner, old folks corner, yoga-meditation corner. A floral garden/scented garden will be a great place to sit back and relax. And we have other features like a formal garden, secret garden, feature forest, water plants, palm court, trellis/pavillions, sculptures and earth mounds.



Mini waterfall, sandy spots and cabana

Shrubs & Greens



Seasonal trees and plants have been selected to provide a naturally beautiful setting. Colour co-ordinated and scented plants for the gardens & pathways of M3M Golfestate.

Community Enjoyment Spaces



Enjoy at our amphitheater or mini theater and roof sit-outs with a performance stage built where your family and friends can enjoy shows or display their own talents. Swimming pool, BBQ pits/dining court/riverside picnic deck will see your weekends come alive or you can use your own party area or the function court. Other features we offer are an interactive fountain, a separate pets garden/dog walking track/relieving area and shopping plaza.

Executive Golf Course Designed by Golf Plan, USA

Golf Course Designer: Kavin Ramsey

Golf Plan is a world-class land planning and landscape architectural firm comprising of professionals with diverse and complementary backgrounds in local, regional and international design fields. The professional staff maintains over 125 years of collective experience, working together to complete projects in over 30 countries. They are continually committed to the highest quality of work, focusing on seeing a client's project from the early planning studies, through design phases and ultimately through the construction supervision process. The firm has an extensive portfolio working for both private and public clients in the land planning and landscape architectural roles.

They have crafted a 9-hole executive golf course par excellence, which can be seen from your very own balcony. So, just imagine waking up to the sprawling greens and play a game that's a class apart. And mastered by even fewer. That's the beauty of this golf course - pristine, perfect, and for a privileged few. Enjoy your game!



Structural Design

by Leslie E Roberts and Associates (LERA), USA

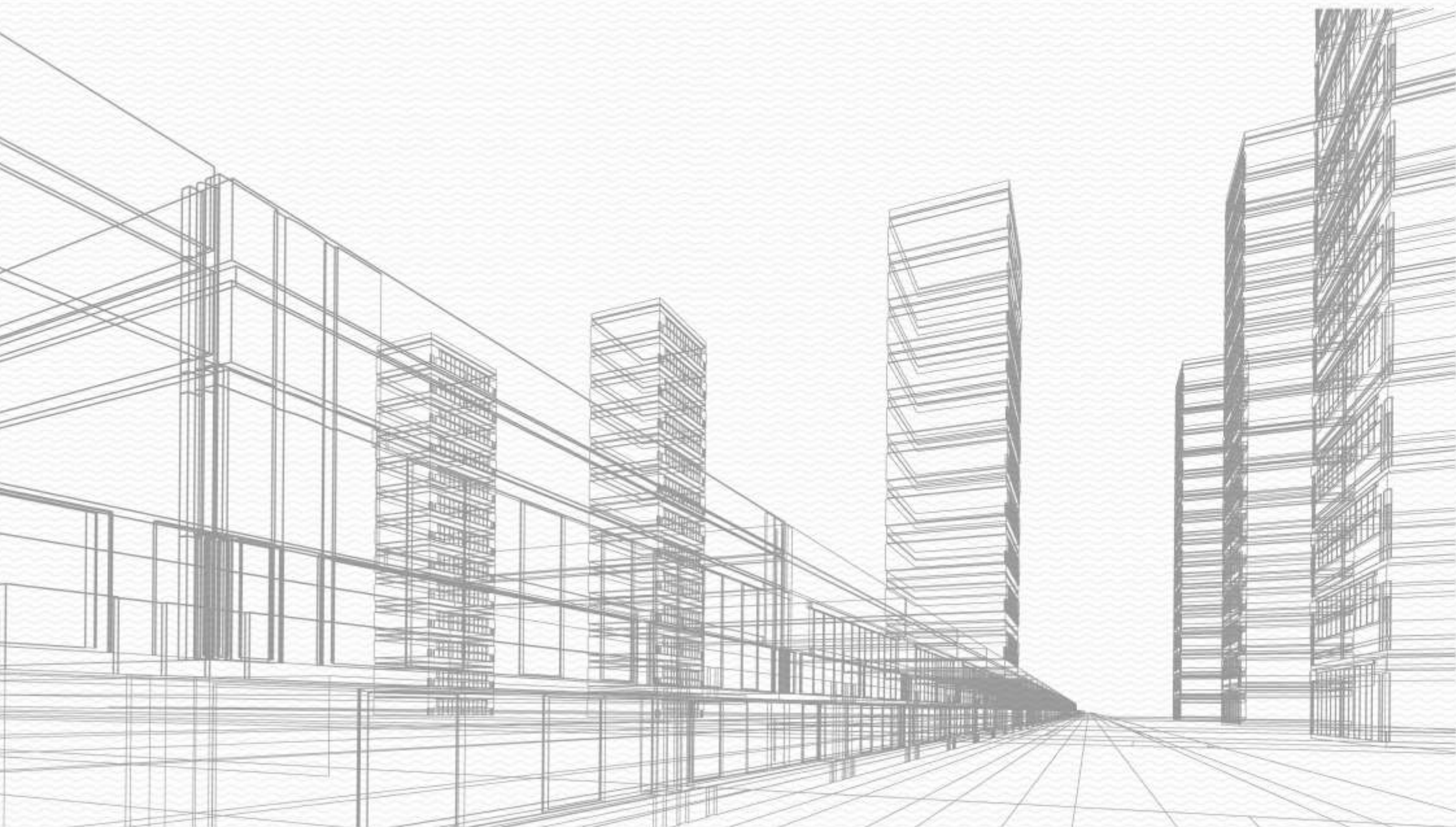
It's not just about how a building looks. It's about what gives the building its strength from within.

Structures are what make buildings become landmarks. That's why structural design is the most crucial technical component of the entire process.

For that we chose a company that has earned a reputation for structures that reflect strength and resolve. They have been associated with some of the

best known structural engineering projects across continents. Now, they have brought their expertise and magic here with steel transfer girders that make the stilts virtually column-less, which gives a whole new dimension to the stilt area with more space. They have used the finest material, created a sound and firm design, and given special attention to all the probabilities and possibilities to ensure complete structural soundness.

In a nutshell, it means that the structure can take-on nearly anything and still stand tall and proud, much like the proud monuments that have stood the test of time, nature and the changing world.




Lit To Perfection

Lighting by Bo Steiber, Singapore

The art of lighting is subtle. It's not just about glaring brightness, but about making the ambience feel warm, welcome and stylish. That finesse is found in every little corner. Along with the finest quality of fixtures that last a lifetime, the positioning of the points accentuate the beauty of the interiors, while the vibrant yet subtle outdoor lighting lends those towers a touch of grace and elegance leaving no dark spaces.

The idea is to add to the décor and the lifestyle of those who reside here. Because finesse comes with stature. And stature comes with achievements that put some people a step ahead of the crowd. The focus is on mood lighting. Be it soft, romantic and intimate or creating the perfect setting for a party, the right kind of lighting gives it a different class altogether.

In other words, this is where the finest quality of lighting and the precise placement come together to weave a dreamy picture on the canvas of reality!



*Construction and Finishing by **L&T***

*No matter how well a project is planned, as long as it's not executed to perfection, it will remain a huge castle in the air with no foothold on the ground. That's why we involved Larsen and Tubro, better known as **L&T** and entrusted this crucial task to them.*

***L&T** has an international presence, with a global spread of offices. It continues to grow its global footprint, with offices and manufacturing facilities in multiple countries. Their expertise is as well founded as their business is diverse. From heavy machinery to construction, they have done it all. And the quality that **L&T** boasts of is impeccable. The finest material has been sourced and used to ensure a finish that's class apart. That makes the construction sturdy and durable, ensuring safety and peace of mind for the residents.*

The quality of construction that's been brought in on this project is all set to create new benchmarks for the business everywhere!

Quality and Speed!



Actual construction picture

*Gateway to an
Extraordinary Life*





Cascading water, a beautiful water body and a steel sculpture par excellence



Entrance – Boulevard: Palm lined boulevard; three lane entry and exit with cycle and pedestrian tracks.

A World of Exclusivity!

It has often been said that the first impression is the last impression. That's why it is essential to give those who live here and who visit the residents to know at the very glance that this is a different world. People who have made this their abode are in a different league. These are people with fine achievements and finer tastes.

A befitting entrance has been crafted with a wide and long palm lined boulevard, lending itself to a broad entry and exit road. The 61 mtr. wide and 244 mtr. long central boulevard road culminates into an arrival water body with a steel sculpture that forms the nodal point between the two phases of the project and is complemented with a cascading water feature at the back. It gives the impression of a grand palace where royalty resides. This is where dreams take off, headed towards unbridled skies. Towards an endless, seamless expanse. In simple words, it's grandeur at its best. Because it's not just an entrance to a building, it's a gateway to a world less-ordinary.



Drop off. And stay on for the pleasure of life...

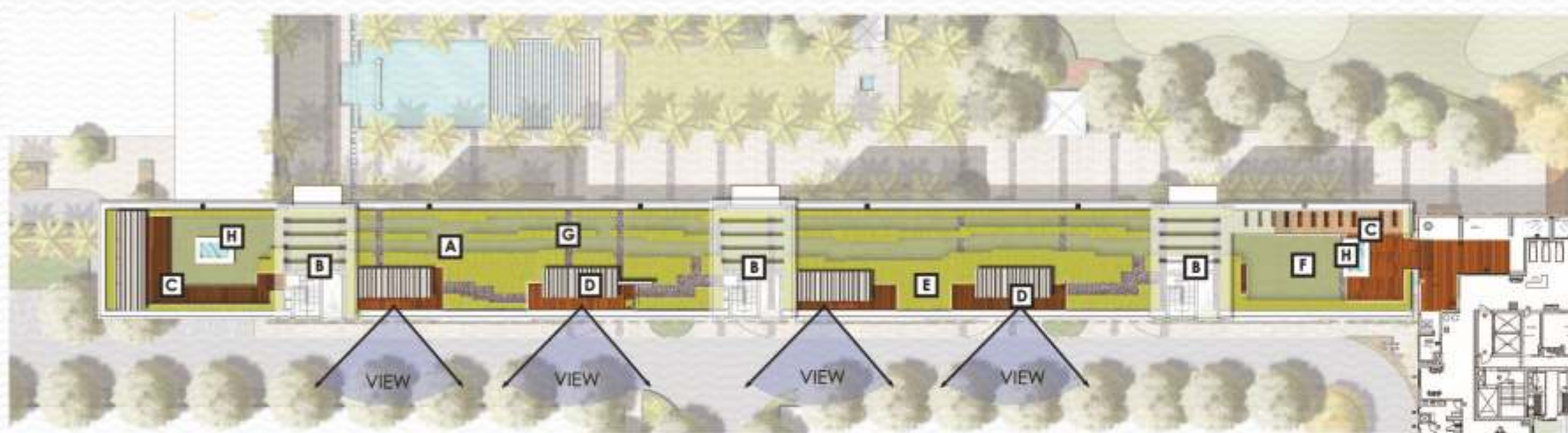
Well appointed tower drop offs and lavish lounge and lobby areas for guests in the stilt area. The 8.5 mtr. high stilts under the tower will offer a breathtaking view of the golf course, bringing you closer to nature. The multiple community zones created within stilt level provide "all weather community areas" with landscaping and recreation zones including kids play areas, skating rinks, basketball courts, amphitheater and rock climbing. This drop off area followed by a seating and planting area is separated by a buffer. A promenade for pedestrians and bicycle enthusiasts is situated right on the golf buffer area.

*“Mama Mia”
Resort Living At Its Best*





Truly unique 250 mtrs. rooftop jogging track



*Tower rooftop plan**

- | | |
|--|--|
| [A] Synthetic Running/Walking Track | [E] Synthetic Turf |
| [B] Architectural Cover | [F] Proposed Outdoor Yoga/Exercise Classroom |
| [C] Relaxation Zone | [G] Cobble/Grey Accent Bands |
| [D] Proposed Wood View Deck With Trellis & Seating | [H] Proposed Water Feature |



“The art-of-healthy-living...”

A fit mind resides in a fit body. And that's why there's a special rooftop jogging track here, along with other facilities, so that those who have come up in life never have to step down. Run, jump, hop or skip, there are a million ways to stay fit and stay in shape. After all, winners always stay ahead. And running is a great way to do just that!

*Tower 2, 3, 4, Fairway East



Private pool for tower residents



- A** Wood Deck
- B** Accent Pots
- C** Pool and Deck
- D** Glass Guardrail
- E** Moveable Seating Around Gas Fire Pit
- F** Lounge Furniture

Dip into the Cool Waters

It's not just a great form of exercise, it's also a great way to know people and cool off some steam. A few strokes across will leave you feeling rejuvenated. After all, those who are at the helm of their lives, need a few moments to themselves.

This is where great ideas come to great achievers.



Many of our balcony terraces are wide enough for entertaining your guests

Sheer Charm

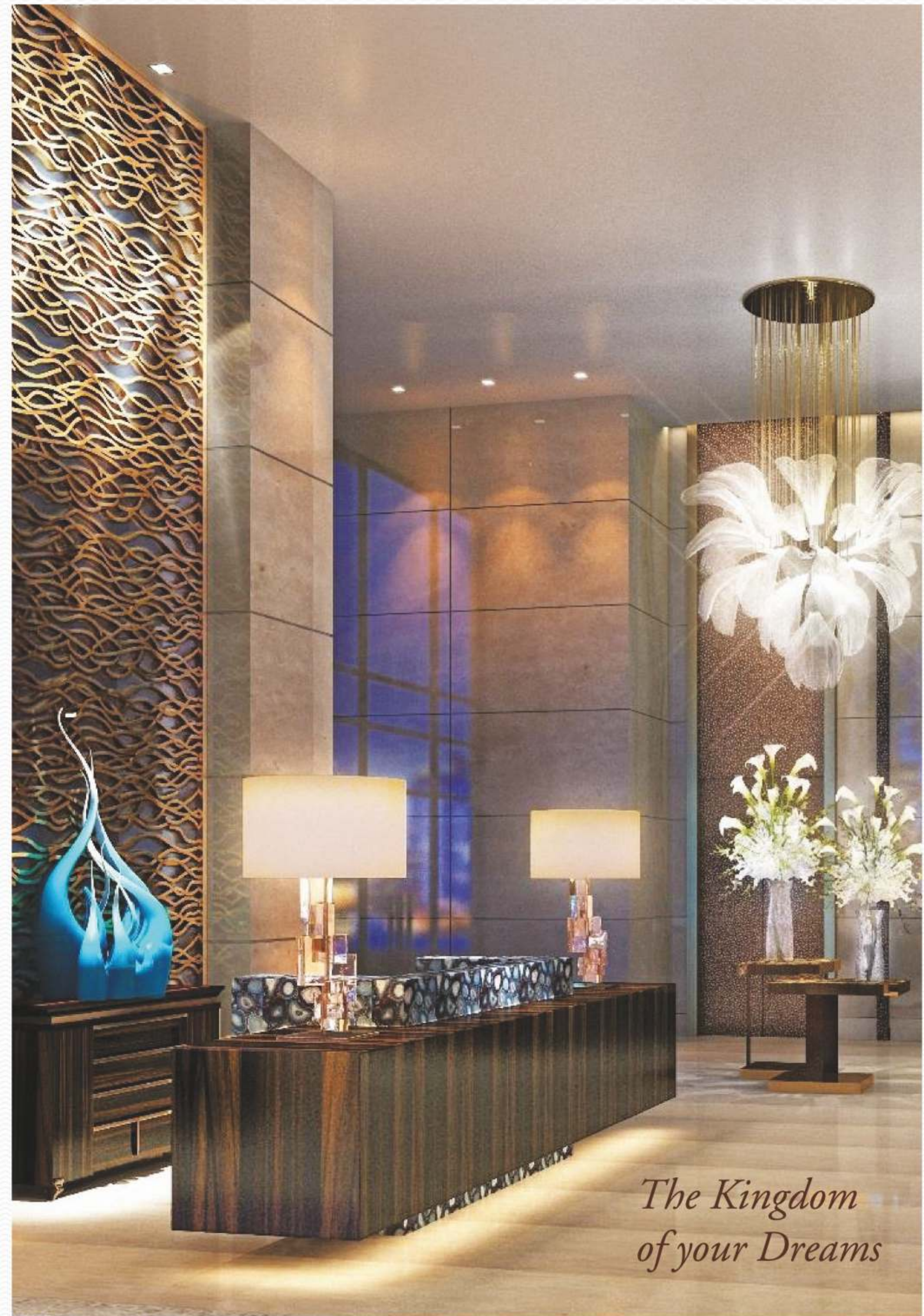
Enjoy the captivating views of golf course from your balcony. The juxtaposition of the warm blue sky above and the greenery below make up for a truly remarkable experience.

Mesmerising Interiors
by Bilkey Llinas Design, USA

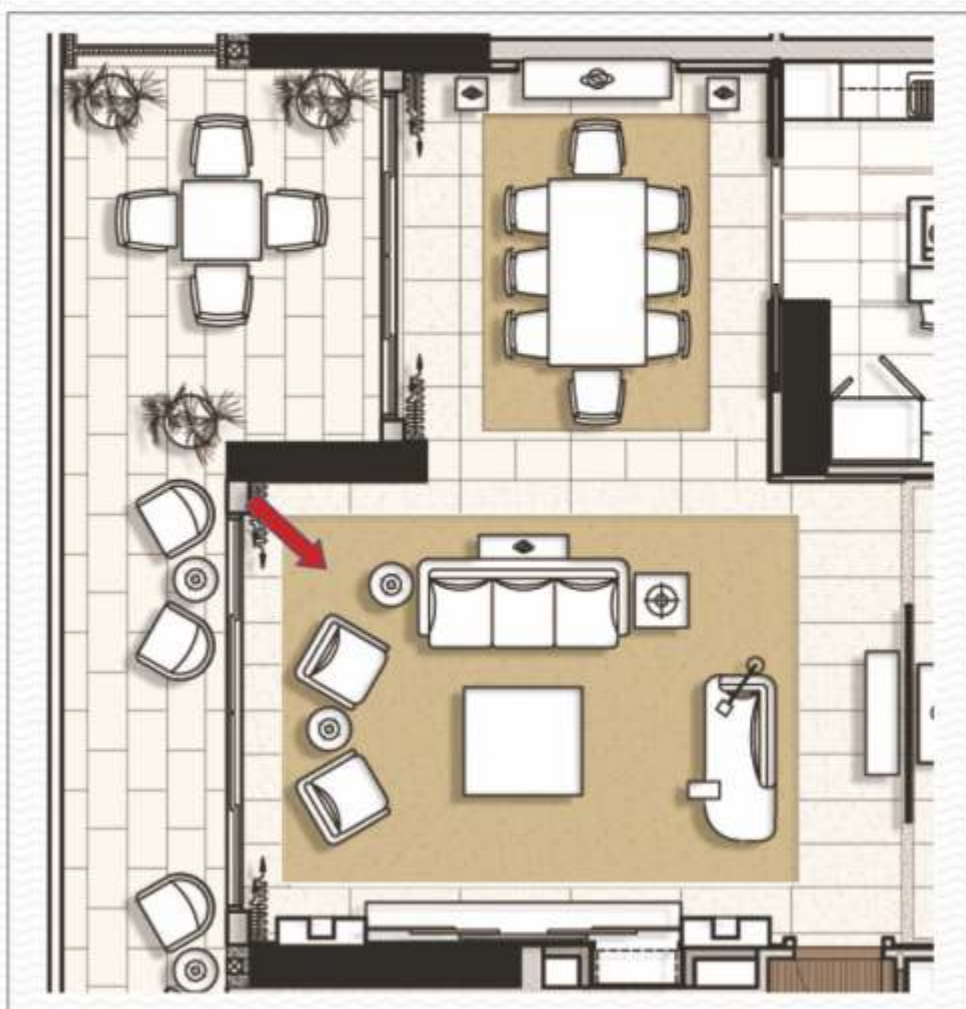


What an entrance lobby!

Given the niche segment of residents we have conceptualised M3M Golfstate for, we wanted to bring in specialists for the interiors. After all, when you're living in the lap of luxury, you'd want nothing to blemish the view, would you? That's why we got in touch with Bilkey Llinas Design from the US. They are people who have done it all. They have decorated homes, hotels, casinos, resorts, country clubs, spas and convention facilities, among others. After proving their mettle around the world and gathering oodles of praise, we got them to design the interiors for us. All in the effort to make sure that your home is perfect not just on the outside, but on the inside too! As Jane Austen said, "There is nothing like staying at home for real comfort."



*The Kingdom
of your Dreams*



*Balcony Flooring**



*Living/Dining & Den-flooring**



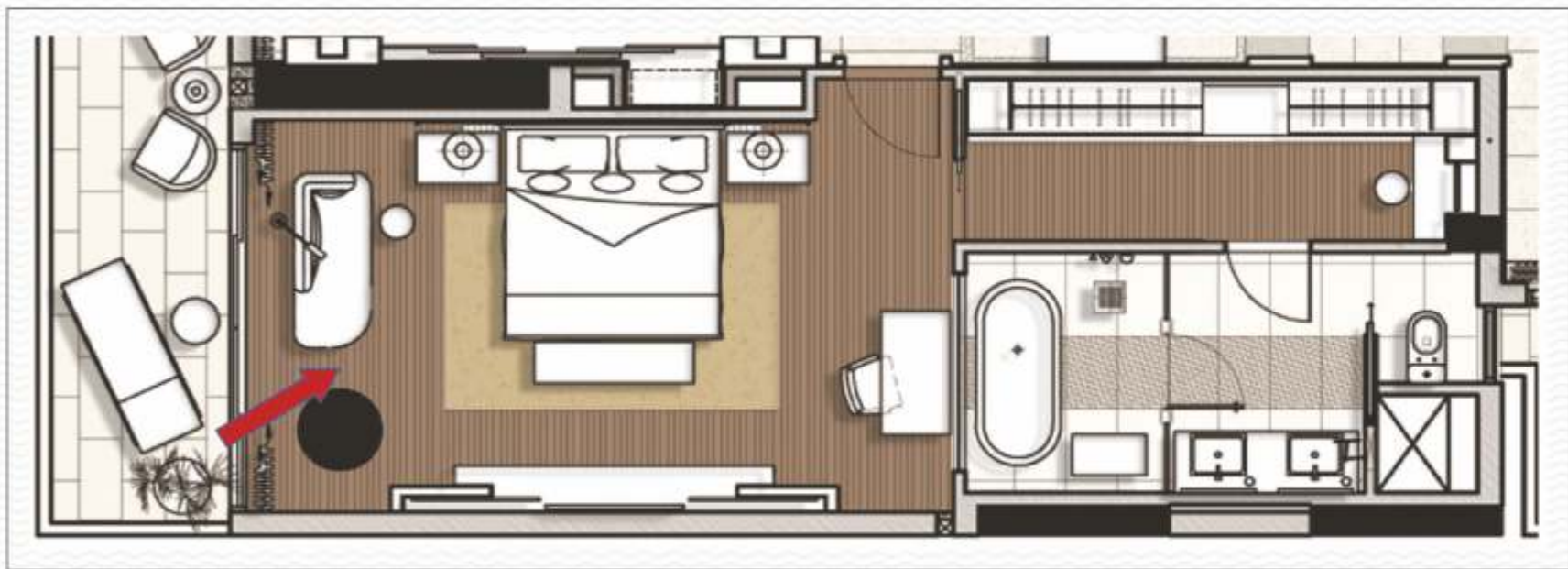
*Entrance Lobby Flooring**

**This or comparable*

Living Room

The living rooms are designed keeping indulgence in mind. In your own private utopia, you'll have plenty of room to entertain your guests or just a quiet spot to enjoy the view. A 10 ft. high clear ceiling gives villa like feel. From the imported marble floors that epitomize grandeur to the immaculate fit & finish, this room couples relaxation and socializing at one grand place.

- Imported marble
- POP punning with acrylic emulsion paint on walls and ceiling
- Flush shutters with polished veneer and polished door frame
- VRV/VRF AC units
- Double glazing resulting in: heat barrier, energy efficiency and better sound insulation



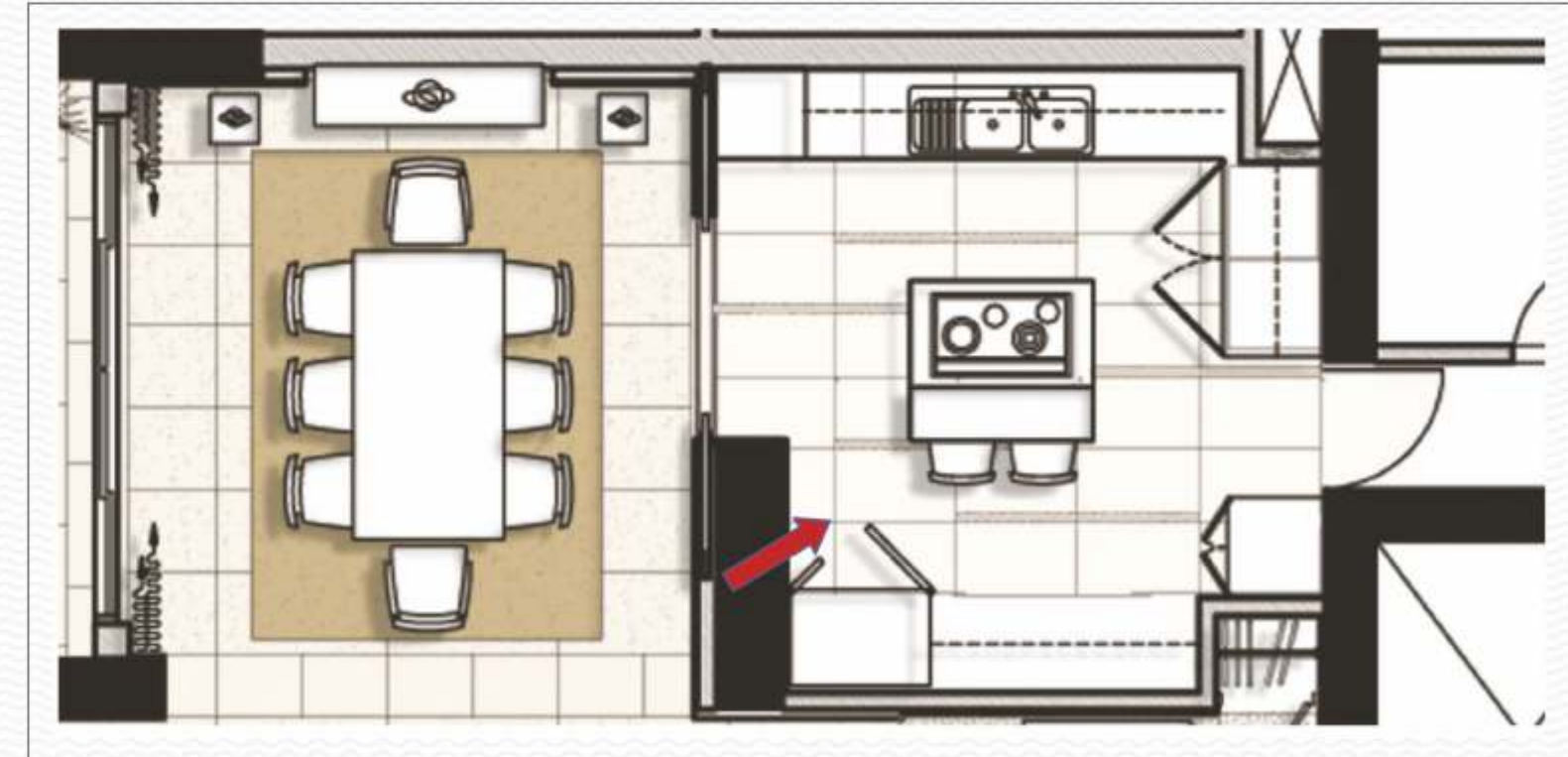
Bedroom Engineered Wooden Floor*

Master Bedroom

A spacious room adorned with the grandeur of wooden flooring and exquisite paint, your home will be a perfect picture of harmony between architecture and nature. Contemporary design is combined with obsessive detailing and high-quality finishes. Furniture and flooring, walls and windows; every detail is beautifully integrated to bring out a seamless flow.

- Imported marbleengineered wooden flooring
- POP punning with acrylic emulsion paint on walls and ceiling
- Doors – high flush shutters & polished veneer
- VRV/VRF AC units
- Windows – Aluminium window frames with combination of double/single glazed panels resulting in: heat barrier, energy efficiency and better sound insulation

*This or comparable



Kitchen

Beautiful and functional these kitchens are crafted to enhance the experience of your family's favourite gathering spot. These kitchens come replete with modular kitchen, fridge, microwave oven, dishwasher and granite counter tops of top international brands. Our modular kitchen combines convenience with style. All the features have been carefully orchestrated to address the needs of a high-quality, contemporary lifestyle.

- *Natural stone* • *Combination of premium tiles and POP punning with acrylic emulsion paint on walls and ceiling*
- *Windows - Aluminium glazings* • *Doors - high flush shutters & polished veneer*



Cabinet-Laminate



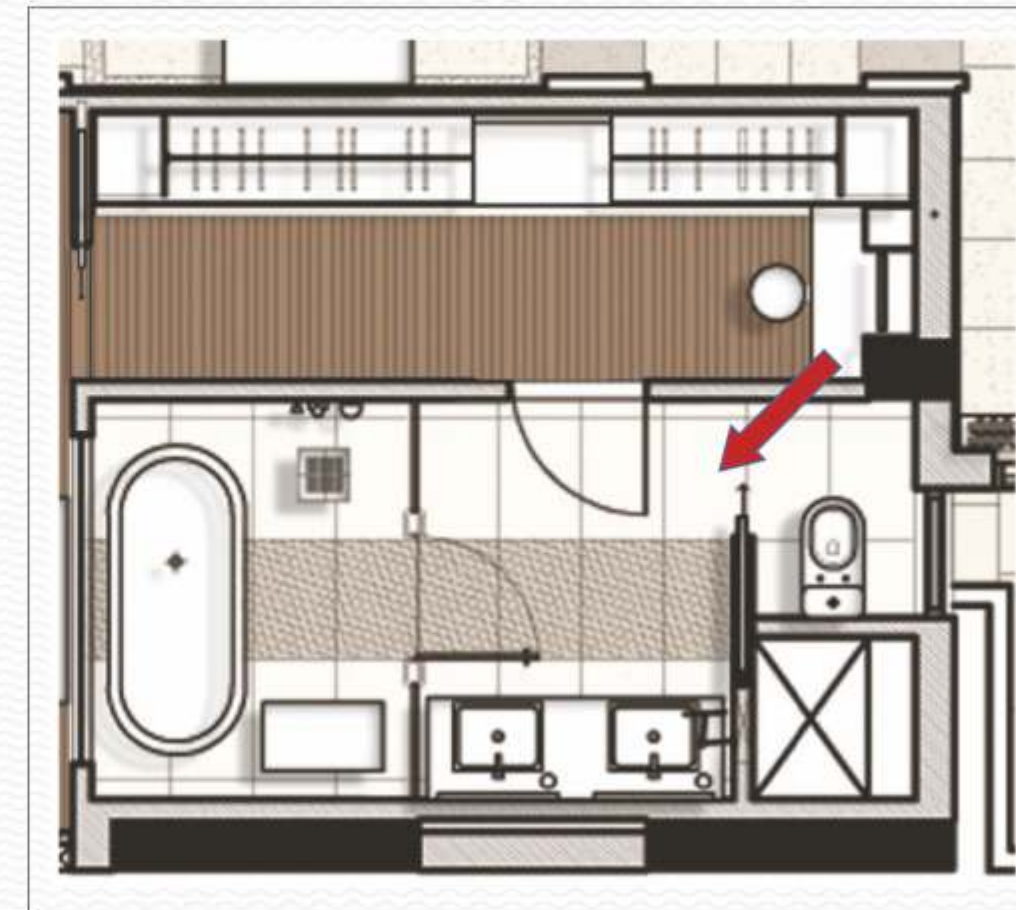
Ceiling Paint



Overhead Cabinet



*Wall Cladding-
Glass Mosaic*



Bath Suites

Bathed in luxury, immerse yourself in our stylish bath suites. Our aesthetically pleasing toilets complement the bedroom it belongs to; we have everything you would need. While the bath suites use imported marble stone, accessories and finishes include imported chinaware, bathtub with jacuzzi and marble counter top.

- Imported marble in master bath suites • False ceiling with acrylic emulsion paint • Doors – high flush shutters & polished veneer
- Imported CP fittings with 5 fixtures in the master bath suites (His & Her sinks, Shower cubicle, WC and a Jacuzzi Tub) and 3 fixture bath suites in the balance bedrooms • Provision of concealed geyser • Windows - Aluminium glazings



Imported Marble Flooring



*Imported Marble Wall Cladding
(Master Toilet)*



False Ceiling

Imperial Duplex



The Duplexes in M3M Golfstate are conceived in a way, where nature's immense beauty meets all the luxury you'd expect. These quintessential duplexes will not only embrace your lifestyle but also add a befitting sense of charm to it. Discover a home where modern architecture merges seamlessly with the natural landscape. The stately **exclusive cantilevered internal staircase** for every duplex gives luxury a whole new meaning. Indulge in opulence crafted with a consummate blend of panache and excellence. So, just relax and let life reinvent itself in such breath-taking golfing surroundings.

Majestic Penthouses

The ultimate statement of class and style, these majestic penthouses are set right up in the sky. With expansive views of green landscape these apartments are a celebration of a rich and rewarding life.

With **exclusive elevators**, these apartments come replete with an **exclusive private pool, pantry, three floors of sheer joy and richness personified**. At these penthouses enjoy unmatched luxury, a privilege only few will experience.

(The Penthouses are so unique that we have a special presentation on them. Please contact us for an exclusive preview appointment)





Joyful Evenings at our Exclusive Club



Not just a destination but a statement of perfection, the Clubhouse has been created with emphasis on exclusivity, luxury and privacy. Separating the building into three principle volumes this Clubhouse delivers an experience of a lifetime. Divided into housing, entertainment, health and sports programs, the club's geometry makes it more convenient.



- A Bench Seating
- B Table Seating
- C Umbrella Seating
- D Formal Palm Grove
- E Gathering/Activity Lawn
- F Linear Water Feature
- G Starter/Hut
- H Focal Jaali
- I Golf Separation Planting/Mounding
- J Apartment Tower
- K Club
- L Fence/Wall
- M Pavillion
- N Table Tennis/Game Table/Chess Game Paving

195-207 →
BROADWAY
CANYON OF HEROES

M3M Concierge Services *Make a wish...See it fulfilled*

For the ones who have made it to the top in life, there are always a few exclusive services that they have earned. Welcome to M3M Concierge Services where we aim to enrich your lives by saving your time and costs, thus allowing you to focus on more important aspects of life, such as work, family and recreation. Our concierge service takes on the responsibility of accomplishing tasks on your behalf, usually with a smile and a flourish.

“The Good Life...at M3M Golfstate”



Promised your daughter that you will go to the Bolshoi Ballet in Moscow. No problem M3M Concierge Services will get it done. Enjoy the 'Kremlin' as well.



No matter where you are M3M Concierge Services will take care of your family back home. The M3M Concierge Services International Desk makes sure that any facility they need will be speedy and convenient.



Want to be there cheering your team in the English Football League, done. Be there when Manchester United goes against Liverpool.



When it's theatre time and 'Phantom of the Opera' is playing on the Broadway, it's time for M3M Concierge Services to make sure you experience this soul enriching experience.



Be it a soulful sufi night at the club or one of the many events you would like to attend, our service will make sure you get the best seats in the house.



'Ring out the old, ring in the new', bringing in the New Year in style. It's time for a cruise ship in the Bahamas. A special offer by the M3M Concierge Services.



As esteemed members of the M3M Concierge Club you will get exclusive invitations to the Delhi Fashion Week! Have a gala time with your wife.



Polo season begins at M3M VIP box at the polo club. And you also get passes to the Prince Charles Polo Hunt at the 'Reading' near London along with two first class tickets on the British Airways to the UK.

Exceptional Homes, Unmatched Amenities



We have created homes that harmonize with their surroundings, enhancing the quality of life for the people who live in them. At M3M Golfstate you will get exclusive amenities that are unsurpassed and have been designed to a standard commensurate for the best. Live serene with a 5-tier security system, video door phones for apartments and parking spread across 2 level basements. Defined pet areas to make sure that your pets are comfortable and get a place of their own. After all a man's best friend deserves his own place. BBQ pits for your weekends, it's a getaway in your own backyard. Rain water harvesting within the complex and every apartment has a Panic Alarm Button connected to central security room.



Specifications

Bringing together the finest materials to create the most stunning masterpiece.

| AREAS | FLOOR | WALLS/CEILING | DOORS & WINDOWS/GLAZING | OTHER |
|--------------------------------|--|--|--|---|
| Master Bedroom/Other Bedrooms | Master Bedroom: Imported Brand Marble/Engineered Wooden Flooring Other Bedrooms: Engineered Wooden Flooring | POP Punning/Gyp Plaster with Acrylic Emulsion Paint on Walls & Ceiling | Doors: 2.4 meters High Flush Shutters with Polished Veneer Windows: Aluminium Window Frames with Combination of Double/Single Glazed Panels | VRV/VRF AC Units |
| Kitchen | Natural Polished Stone | Combination of Premium Tiles & POP Punning/Gyp Plaster with Acrylic Emulsion Paint on Walls Ceiling: Acrylic Emulsion Paint | Doors: 2.4 meters High Flush Shutters with Polished Veneer Windows: Aluminium Glazings | Designer Modular Kitchen, Fully Fitted With Premium Brand Hob, Chimney, Dishwasher, Microwave Oven and Refrigerator. Granite Counter Top, Stainless Steel Sink Imported Brand CP Fittings |
| Master Toilets & Other Toilets | Imported Brand Marble | Master Toilet: Imported Brand Marble Other Toilets: Premium Tiles False Ceiling with Acrylic Emulsion Paint | Doors: 2.4 meters High Flush Shutters with Polished Veneer Windows: Aluminium Glazings | Master Toilet: 5 Fixture Toilet With Premium Quality Imported Brand Chinaware, Bathtub with Jacuzzi. Other Toilet: 3 Fixture Toilet with Imported Brand Chinaware Imported Brand CP Fittings, Marble Counter, Glazed Shower Enclosure, Exhaust Fan Vented to Exterior, Mirror with Wall Mounted Vanity Lighting |

| AREAS | FLOOR | WALLS/CEILING | DOORS & WINDOWS/GLAZING | OTHER |
|---|--------------------------|--|--|---------------------------------------|
| Living Room/Dining/Foyer/ Family Room/Study | Imported Brand Marble | POP Punning/Gyp Plaster with Acrylic Emulsion Paint on Walls & Ceiling | Entrance Door: 2.4 meters High Flush Shutters with Polished Veneer and Polished Door Frame. Internal Doors: 2.4 meters High Flush Shutters with Polished Veneer Windows: Aluminium Window Frames with Combination of Double/Single Glazed Panels | VRV/VRF AC Units |
| Utility/Servant Room | Ceramic Tiles | Oil Bound Distemper Paint | Doors: 2.4 meters High Flush Shutters with Polished Wood Veneer Windows: Aluminium Glazings | Indian Brand Chinaware and CP Fitting |
| Balcony/Terraces | Anti-Skid Vitrified Tile | Exterior Paint | Windows: Aluminium Glazings | |

Power Backup and CCTV Surveillance



100% Power backup with suitable diversity and load factor per apartment, round-the-clock treated water supply & all systems for fire safety as per norms.



CCTV for basements, ground floor lobbies, entry and exit to the development. Automatic boom barriers and manual gates at entry and exits, intelligent access control system, panic alarm button is installed in master bedroom and a door phone near apartment entrance, connected to the security control room/management office.



Premium modular switches & sockets, copper wiring.

The World of M3M



A constant pursuit of joy in creation of a happy and networked residential society that is rewarding to the families and completely secure.



Forming prime commercial & retail spaces, most luxurious shopping destinations and the most sophisticated offices.



Redefining the aura of hospitality through unmatched services and unfathomable care to provide the utmost comfort and a fulfilling experience.



Developing the future, through world class and truly global workspaces for IT/ITES & SEZs.



Enhancing enlightenment of minds through holistic education and world class schools and institutions.



Establishing a global footprint through international associations and commendable tie-ups for technologically superior and world class infrastructure.



M3M CARE is the human face of the company that embodies the group's CSR activities. We believe in giving back to our workers, our community and to our natural surroundings.

Other M3M Projects



SECTOR-65, GURGAON



SECTOR-70A, GURGAON



SECTOR-107, GURGAON



SECTOR-65, GURGAON



SECTOR-67, GURGAON



SECTOR-66, GURGAON



SECTOR-67, GURGAON



SECTOR-66, GURGAON



SECTOR-67, GURGAON



SECTOR-67, GURGAON

DISCLAIMER: The information contained in this Brochure ("Brochure"), is merely informative and unless otherwise expressly provided, all contents are for general information purposes. Nothing contained herein intends to constitute an offer/ invitation to offer or sale. The reader hereby accepts and agrees to be bound by and comply with these legal terms of use. This Brochure contains proprietary information, exclusive to the brand "M3M" or M3M India Limited ("Company"). All images on the Brochure, including text, photos, illustrations, graphs, logos, trade and services brands, are fully owned by Company and are protected by copyright, trademark rights and other intellectual property rights under law. The contents, and any information or opinion on the Company's projects, products and business, may not be reproduced, transmitted (by any means), modified, sold, circulated, shared or otherwise provided, in whole or in part, to any other person or entity store, archive or in any other way use for any public or commercial purpose without the Company's explicit consent. Company reserves its right to revoke any such consent, without prior notice. Any unauthorized review, use, disclosure, dissemination, forwarding, printing or copying of any page, information, brochure or any action taken in reliance on the information is strictly prohibited and may be unlawful. The Company does not warrant the completeness, accuracy, correctness of the information available herein and the readers are advised to verify any/ all information from the Company before claiming any reliance on it. The information and contents herein, including all designs, layouts, specifications, plans, services, facilities and infrastructure are illustrative; and subject to government norms, and may be changed without notice. All areas and figures are indicative and the units mentioned herein are subject to availability. Further, the contents are subject to terms as stated in the Application Form and Buyer's Agreement. License No. 234 of 2007 dated 16/10/2007 (Renewal dt: 19/04/2012 & 02/07/2014), 52 of 2009 dated 28/08/2009 (Renewal dt: 04/12/2013), and 35 of 2010 dated 06/05/2010 accorded to M/s Manglam Multiplex Pvt. Ltd. for to develop a Group Housing Colony over 62.99 acres of Land. Building Plan Approval No. JP-3571/JD/05/2012/19471 dated 01.10.2012 granted for existing development, subject to revision for future development. Total No. of Apartments 1722. Provision for community building, shops for convenient shopping, nursery school, primary school and other amenities as per approved plans, and subject to conditions. Copies of approvals are available for inspection at Developer's office at Paras Twin Tower, Tower B, 6th Floor, Golf Course Road, Sector 54, Gurgaon, Haryana. -1 hectare = 2.471 acres, -1 Sq. Mtr. = 10.764 Sq. Ft. Some of the information may give an impression of forward looking statements even though they are not meant or intended to be so and customers dealing with such information are required to undertake full and independent analysis thereof. In no event will the Company be liable to the reader or any third party for any incidental, consequential, indirect, special, or exemplary damages, including, without limitation, loss of business, lost profits, business interruption, loss of business information or any pecuniary loss, arising out of, in connection with, or relating to the use or performance of the information based out of or contained herein. The Company and any of its affiliates, subsidiaries, officers, directors, employees or agents provide the Brochure and the information on an "as is" basis and do not make any express or implied warranties, representations, endorsements or conditions with respect to the Brochure or the Information, including without limitation, warranties as to merchantability, operation, non-infringement, usefulness, completeness, accuracy, current validity, reliability and fitness for a particular purpose. This property is mortgaged with Indiabulls Housing Finance Ltd. NOC for sale of flats / property will be provided as and when required.



The Group M3M stands for Magnificence in the trinity of Men, Materials and Money. Simply put, the organization has a philosophy that strives for excellence culminating in absolute Magnificence in every aspect of its character, ethics and way of doing business. What the Group stands for is in sync with its slogan of "Our Expertise. Your Joy." The organization firmly believes in achieving brilliance through true professionalism and cutting edge technology.



The M3M Life, a part of M3M Group's residential projects has always been versatile in its approach towards perfection. In the quest to present a flourishing premium lifestyle these apartment configurations range from well-planned and spacious duplexes to palatial 3-level penthouses while keeping the needs and requirements of our customers in mind. Keeping our customers' ease and comfort upfront, we made sure that all our projects are strategically located in Gurgaon's top residential sectors and in vicinity of the corridor that will connect Delhi with Gurgaon, thus giving the best there can be in a complete package.